

# I can love like Jesus.

## Bible Story

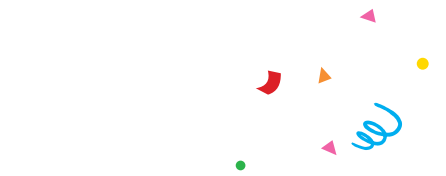
**Jesus Is Gentle**  
Mark 5:25-34

Jesus is kind and gentle to a woman after she touches Him so she can be healed.

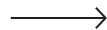


### MEMORY VERSE

"A friend loves  
at all times."  
Proverbs 17:17, NIV



Weekly Cues



# I can love like Jesus.

## Bible Story

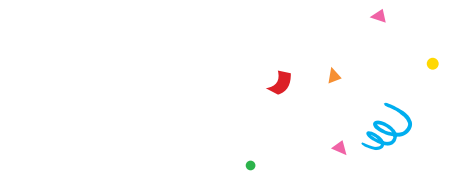
**Jesus Is Gentle**  
Mark 5:25-34

Jesus is kind and gentle to a woman after she touches Him so she can be healed.



### MEMORY VERSE

"A friend loves  
at all times."  
Proverbs 17:17, NIV



Weekly Cues



# Preschool

ENGAGE IN EVERYDAY MOMENTS TOGETHER



## Morning Time

When you go into your child's room, say: "Good morning, [child's name]! Let's make today a KIND day, and be kind like Jesus."



## Cuddle Time

Cuddle with your child and pray: "God, Jesus is so kind and gentle. Please help [name of child] and me choose to be kind and gentle with our hands and our words so we can love like Jesus."



## Drive Time

Take a toy friend with you while on the go. Talk about ways your child can be gentle with the toy friend, like saying gentle words and touching them gently. Say, "Jesus is kind and gentle, and He wants us to be kind and gentle, too."



## Bath Time

As you bathe your child, sing the following words to the tune of "Wheels on the Bus": "Jesus shows me how to love, love, love. Love, love, love. Love, love, love. Jesus shows me how to love, love, love. I can love like Jesus!"



PARENT CUE

Download the free Parent Cue app  
AVAILABLE FOR APPLE AND ANDROID DEVICES

©2023 Parent Cue. All Rights Reserved.

# Preschool

ENGAGE IN EVERYDAY MOMENTS TOGETHER



## Morning Time

When you go into your child's room, say: "Good morning, [child's name]! Let's make today a KIND day, and be kind like Jesus."



## Cuddle Time

Cuddle with your child and pray: "God, Jesus is so kind and gentle. Please help [name of child] and me choose to be kind and gentle with our hands and our words so we can love like Jesus."



## Drive Time

Take a toy friend with you while on the go. Talk about ways your child can be gentle with the toy friend, like saying gentle words and touching them gently. Say, "Jesus is kind and gentle, and He wants us to be kind and gentle, too."



## Bath Time

As you bathe your child, sing the following words to the tune of "Wheels on the Bus": "Jesus shows me how to love, love, love. Love, love, love. Love, love, love. Jesus shows me how to love, love, love. I can love like Jesus!"



PARENT CUE

Download the free Parent Cue app  
AVAILABLE FOR APPLE AND ANDROID DEVICES

©2023 Parent Cue. All Rights Reserved.